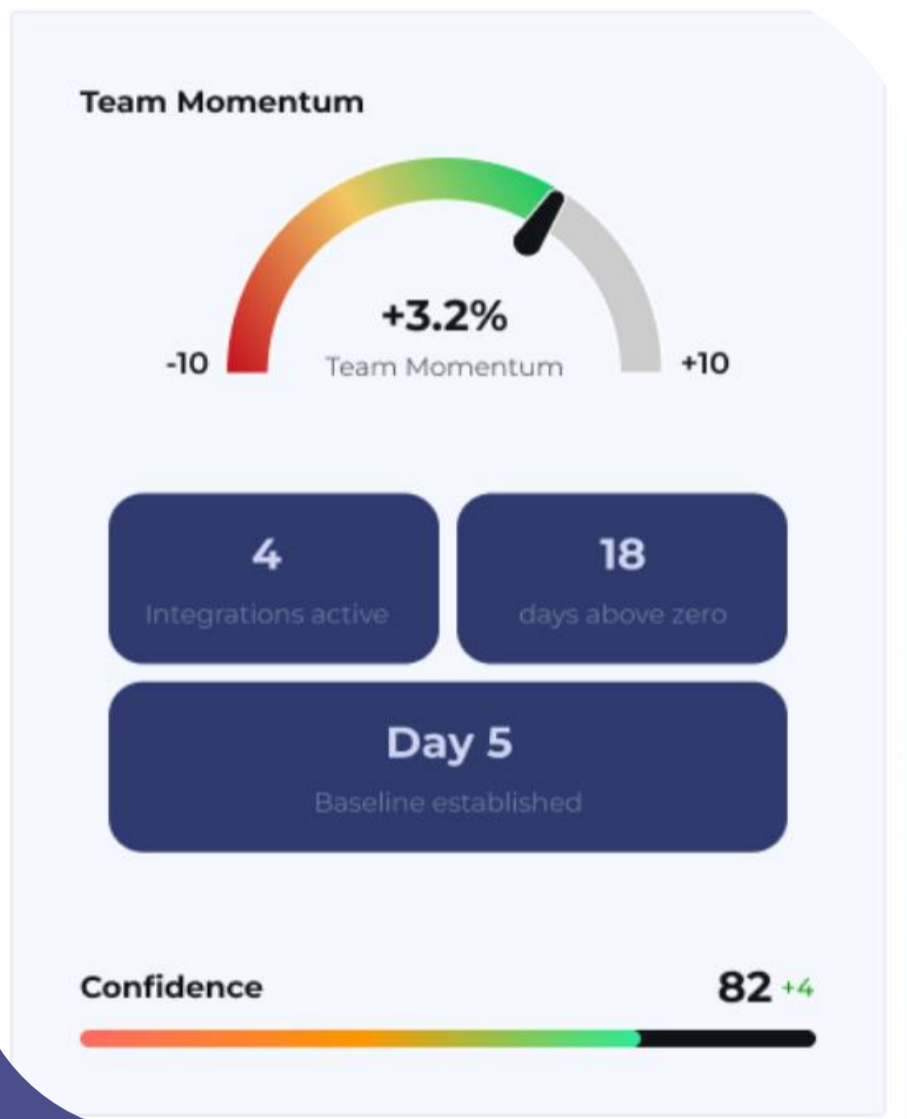


# Surface and explain execution health continuously. Stop roadmap drift early.



## Why we built this

"I started by studying burnout in engineering teams. What I found was that late discovery of roadmap drift is what creates the conditions that exhaust good teams. Rhenari makes drift visible early enough to act."

– Mina Raver, co-founder, Rhenari

## About Rhenari:

Rhenari combines the data access of software with the interpretive depth of consulting to deliver continuous roadmap monitoring for SaaS product and engineering leaders.

So you ship what you plan, every time.

## What we offer

Rhenari is continuous roadmap monitoring for product and engineering leaders. It connects to the tools your teams already use — Microsoft Teams, Microsoft 365, Jira, and Azure DevOps — and reads behavioral metadata: who communicated with whom, when, how often, and in what pattern. Message content is never stored.

It surfaces two scores directly in Microsoft Teams. Momentum measures whether execution is converging on stated goals. Confidence measures whether the signal is strong enough to trust. Each score is accompanied by plain-language insights explaining what is driving acceleration or friction, and proactive alerts that flag drift and risk early enough to respond.

Fully hosted SaaS. Nothing deploys in your environment. Setup takes minutes.

## Rhenari

<https://www.rhenari.com>

[hello@rhenari.com](mailto:hello@rhenari.com)

302-985-9541

[See our offer on the Microsoft Commercial Marketplace](#)

# Why Rhenari?

## Continuous, not periodic

Most execution visibility happens in cycles — quarterly reviews, weekly standups, monthly board prep. Rhenari monitors continuously. Drift that would take weeks to surface in a status meeting is flagged the day patterns shift.

## Interpreted, not just measured

Dashboards show what happened. Rhenari interprets what it means. Every score includes a plain-language explanation of what is driving acceleration or friction — not metrics to decode, but direction to act on.

## Complete, not filtered

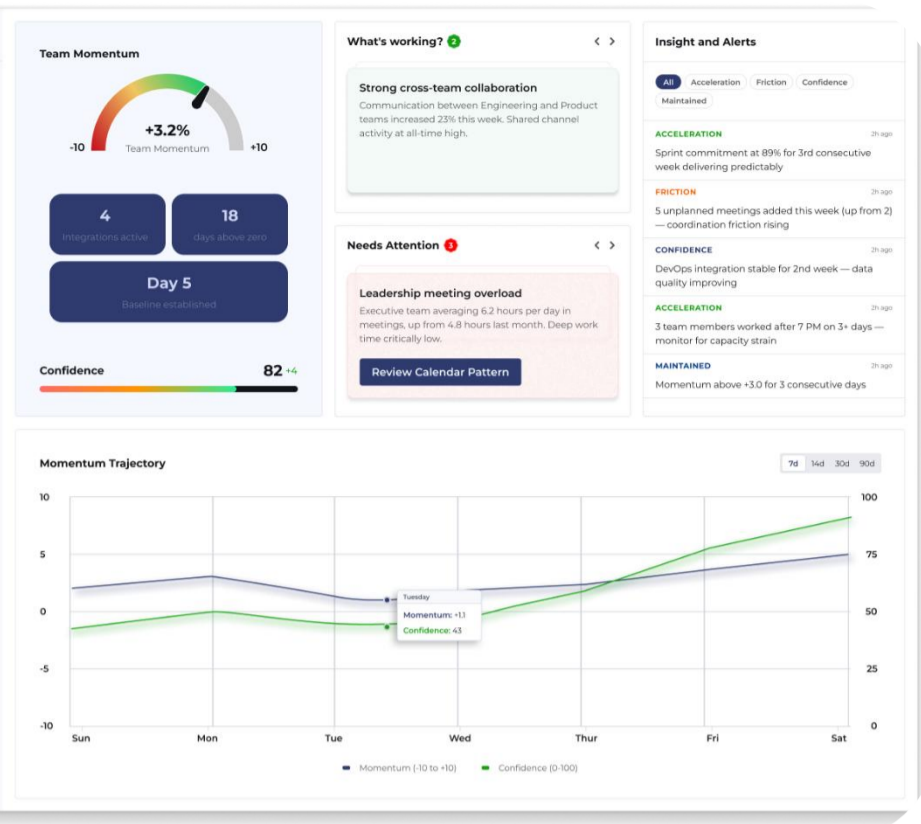
Status updates pass through people, and each handoff compresses the signal. Rhenari reads execution data directly from connected tools — before any human filter touches it.

## Protective, not extractive

Rhenari reads signals, not content. Message bodies and email text are never stored. Team-level analytics only — individual data is never surfaced. AES-256 at rest, TLS 1.2+ in transit, tenant isolation at every layer.

## Built for Teams

Scores, insights, and alerts arrive in the Teams channels your team already monitors. Procured through Microsoft Commercial Marketplace. Built on Microsoft Azure. No new app to learn.



## Key use cases



### Daily execution visibility

Momentum and Confidence scores delivered to your Teams channel every morning with plain-language explanations of what is driving them.



### Early drift detection

Proactive alerts surface roadmap drift, anomalies, and capacity risk before they compound into boardroom surprises.



### Cross-tool signal reading

Reads behavioral metadata across Jira, Azure DevOps, Microsoft 365, and Teams — connecting signals no single tool can see alone.



### Zero deployment setup

Fully hosted SaaS. Tenant admin completes guided onboarding inside the Teams app in minutes. First confident scores in 3–5 days.



**Rhenari + Microsoft** Rhenari is built on Microsoft Azure, delivered inside Microsoft Teams, and procured through the Microsoft Commercial Marketplace. It extends your existing Microsoft investment by turning the collaboration and delivery signals already flowing through your Microsoft environment into continuous execution intelligence — no new infrastructure, no new app to learn.

Learn more at [www.rhenari.com](http://www.rhenari.com)

Rhenari

[www.rhenari.com](http://www.rhenari.com) | [hello@rhenari.com](mailto:hello@rhenari.com) | 605-939-3836

See our offer on the [Microsoft Commercial Marketplace](#)