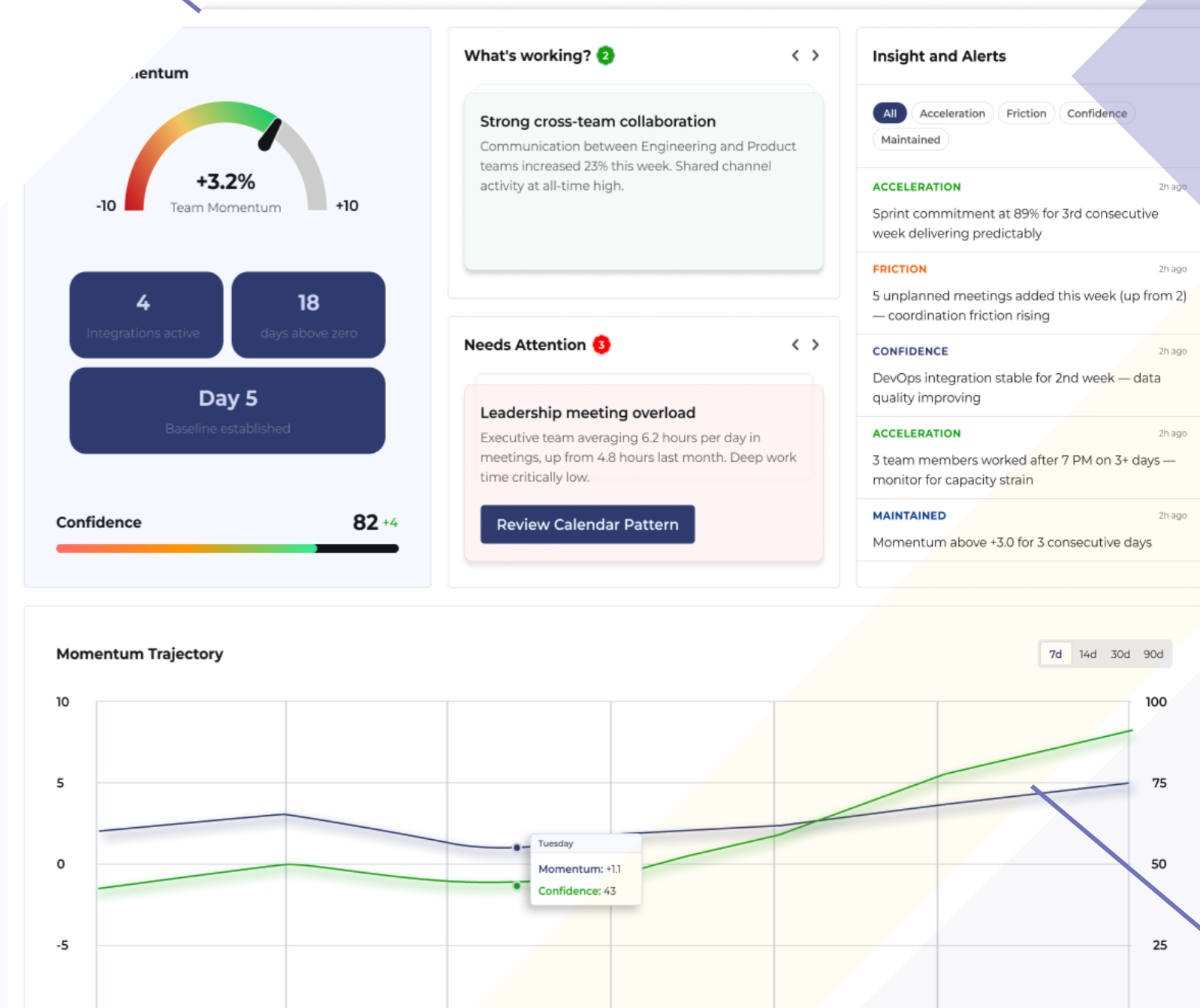


# Rhenari: Continuous Roadmap Monitoring

Surface execution health. Explain what's driving it. Act before drift compounds.

05/25/2026



# What this isn't

Rhenari is *not* an engineering analytics platform.

Engineering analytics measure the delivery pipeline. Rhenari measures whether what's being delivered is what was planned.



## NOT a roadmap tool

Rhenari doesn't help you build or manage the roadmap. It monitors whether execution is actually following it.

## NOT an AI assistant

An assistant answers the question you asked. Rhenari surfaces what you didn't know to ask — because it reads signals you aren't watching.

## NOT surveillance

Rhenari reads behavioral metadata — patterns of communication and activity. It never surfaces individual-level data. Outputs are team-level only. Minimum group size enforced.



Mina Raver  
Co-founder, CEO

## Product leaders at high growth SaaS companies are flying blind on execution.

Product and engineering leaders are accountable to roadmap outcomes they can't fully see. The signals that would reveal drift exist in their tools — but each human handoff filters, compresses, and delays them before the picture arrives.



### Primary challenges

Execution signals pass through status meetings, update emails, and filtered reports before reaching the person accountable. Each handoff compresses the signal. By the time the picture arrives, it's incomplete — and the leader can feel it.



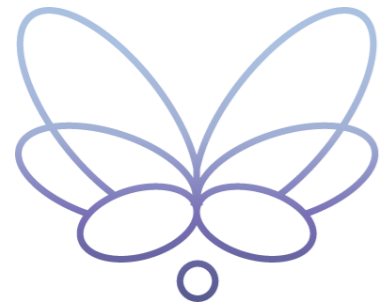
### Ideal solution

A system that reads execution signals directly from the tools teams already use — before any human filter touches them — interprets what they mean, and delivers the full picture continuously, in plain language, early enough to act.



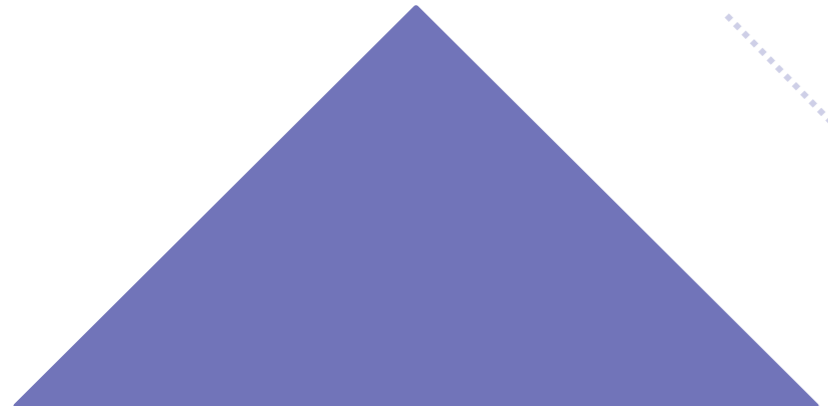
### Desired outcomes

Roadmap drift detected in days, not quarters. Plain-language explanations of what's driving acceleration or friction. Fewer reactive reprioritizations. Less wasted work absorbed by the team. Confidence in the picture you're presenting.



# Enter Rhenari

Rhenari is continuous roadmap monitoring that combines the complete, unfiltered data access of software with the interpretive depth of consulting — delivered automatically, every day, in Microsoft Teams.



## Momentum Score

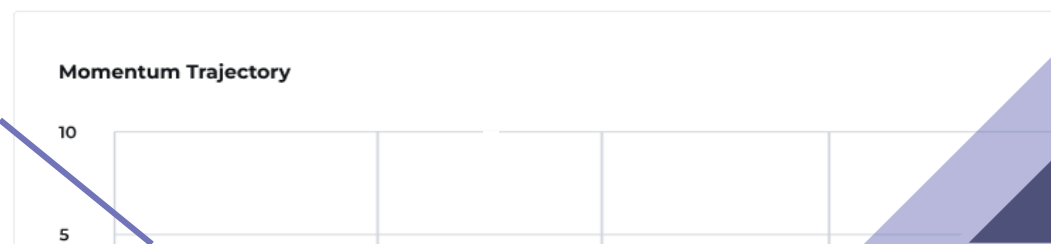
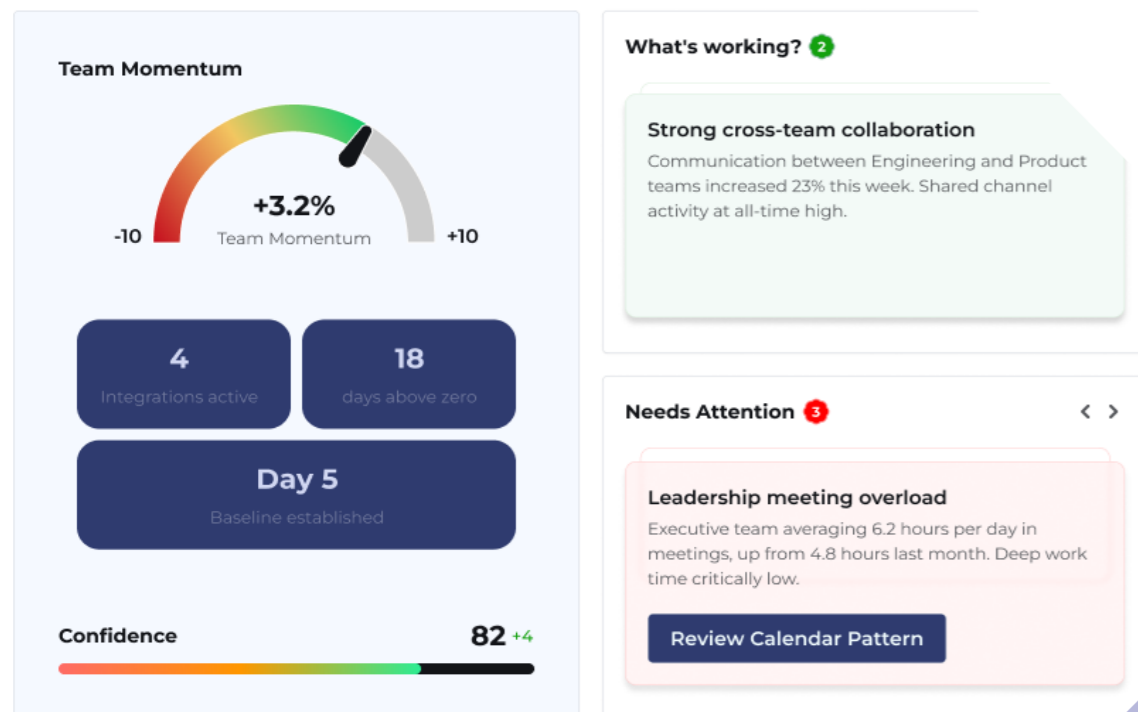
Measures whether execution is converging on stated goals. Not speed. Direction.

## Confidence Score

Measures whether the underlying signal is strong enough to trust the reading.

## Plain-language Insights

What's driving acceleration or friction — explained, not just measured.





Olu Oragbade  
Co-founder, CTO

## How Rhenari works

Your tenant admin opens the Rhenari app in Microsoft Teams and completes three setup steps: configure access and permissions, select the Teams channels where scores and alerts should arrive, and add the departments to monitor. No infrastructure deployment. No cloud engineering support. Analytics begin automatically once departments are active. Deep analysis, department views, and structured workflows live in the Rhenari workspace — accessed as a Teams personal app.

### ▶ Connect

Integrates with Microsoft Teams, Microsoft 365, Jira, and Azure DevOps. Credentials stored in Rhenari-managed vault. Nothing deployed in your environment.

### ▶ Monitor

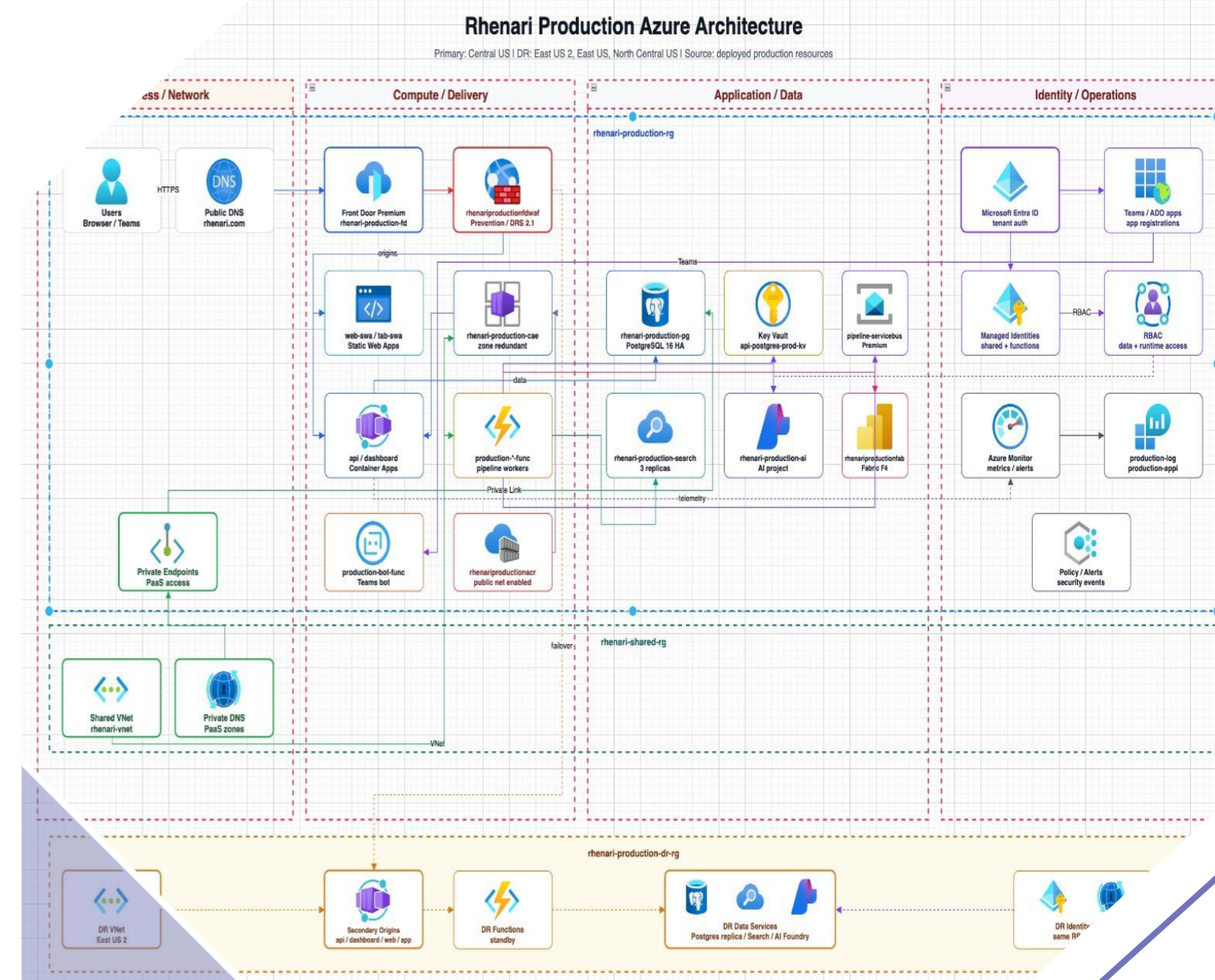
Continuously reads behavioral metadata — communication patterns, meeting cadence, task activity, delivery signals — to build a living picture of execution health.

### ▶ Surface

Delivers Momentum and Confidence scores daily in Teams with plain-language insights and proactive alerts for drift, anomalies, and capacity risk.

# Security and data handling

Rhenari reads signals, not content. Message bodies, email text, and long-form content are never written to storage. When the AI classifies an event, it reads source content ephememerally, processes it in memory, and discards it. The structured analytical output is persisted. The source content is not. Individual data is never surfaced.



## Tenant isolation

Every operation scoped to your tenant at every layer — identity, API, secret storage, analytics engine, and serving outputs. No cross-tenant data ever in scope.



## Encryption

AES-256 at rest. TLS 1.2+ in transit across all application, bot, and integration traffic. Integration credentials stored in Rhenari-managed Key Vault.



## Compliance readiness

SOC 2 Type II controls mapped and operating. HIPAA Security Rule mapped. ISO 27001 Annex A mapped. BAA and DPA available where applicable.

# Start Your Free Trial Through Microsoft Marketplace — MACC eligible

Ask a question via email: [hello@rhenari.com](mailto:hello@rhenari.com)

[Learn more](#)

[See our offer on the Microsoft Marketplace](#)

